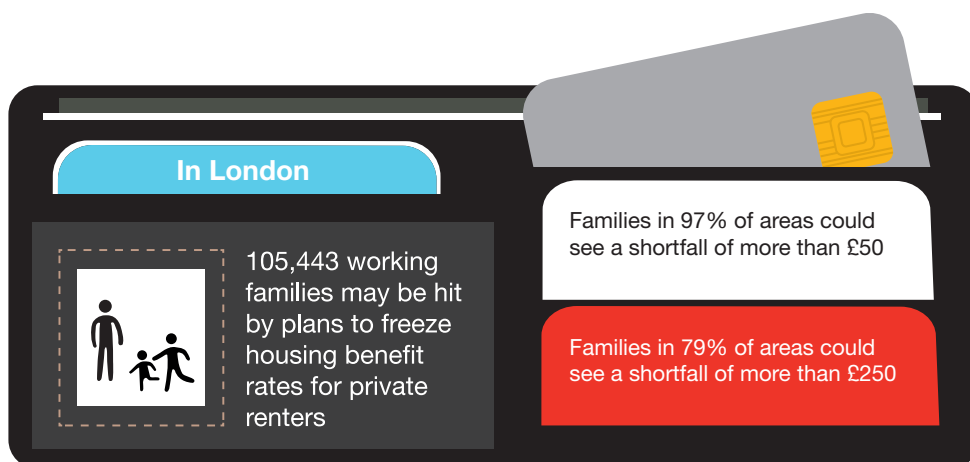
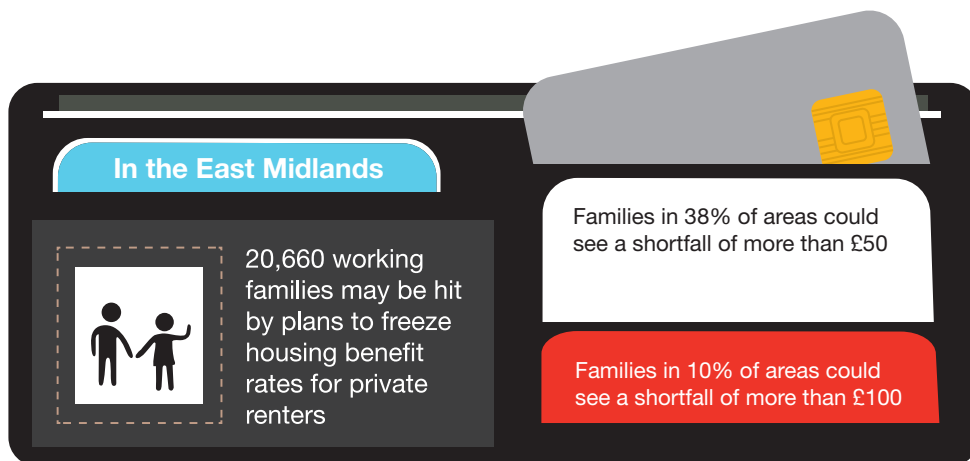
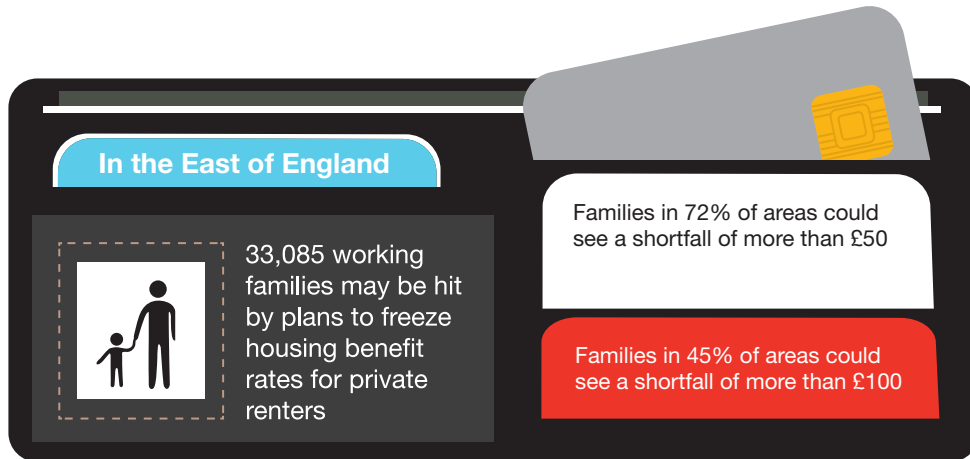



Proposed freeze to Local Housing Allowance


Housing benefit rates for private renters (known as local housing allowance) is due to be frozen from now until 2020. Even if rents rise slightly slower than they had in the past, thousands of working families face increasing hardship and tough choices as they see the money they have covering less and less of their rent each year.

And this isn't just in expensive areas. These are growth cities like Bristol, Sheffield and Manchester – areas where families need to live in order to keep their jobs. As the figures below show, families across the country could be badly affected.






In South East England


 57,904 working families may be hit by plans to freeze housing benefit rates for private renters

Families in 70% of areas could see a shortfall of more than £50

Families in 43% of areas could see a shortfall of more than £100




In South West England


 35,996 working families may be hit by plans to freeze housing benefit rates for private renters

Families in 49% of areas could see a shortfall of more than £50

Families in 16% of areas could see a shortfall of more than £100



In the West Midlands

 26,723 working families may be hit by plans to freeze housing benefit rates for private renters

Families in 47% of areas could see a shortfall of more than £50

Families in 10% of areas could see a shortfall of more than £100

To find out more about why we're worried, [click here](#).

To find out more about our analysis, [click here](#).