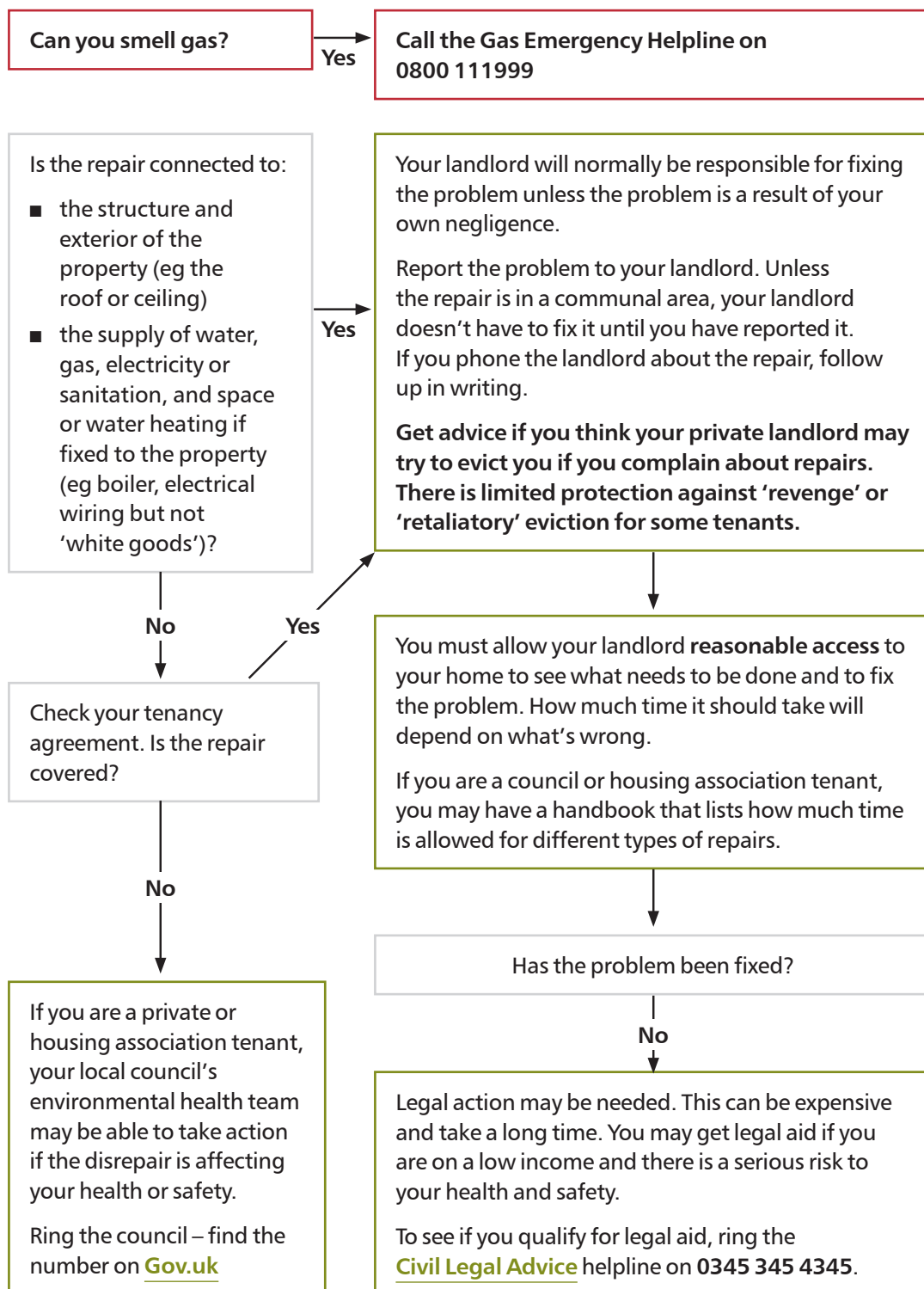


# Dealing with disrepair

This flowchart provides an overview of how to deal with disrepair if you are a tenant.



Funded by UK Government



Registered charity in England and Wales (263710) and in Scotland (SC002327).

**Note**  
Information contained in this factsheet is correct at the time of publication. Please check details before use.

## Further advice

You can get further advice from Shelter's free\* housing advice helpline (0808 800 4444), a local Shelter advice service or local Citizens Advice office, or by visiting [england.shelter.org.uk/housing\\_advice](http://england.shelter.org.uk/housing_advice)

\*Calls are free from UK landlines and main mobile networks.