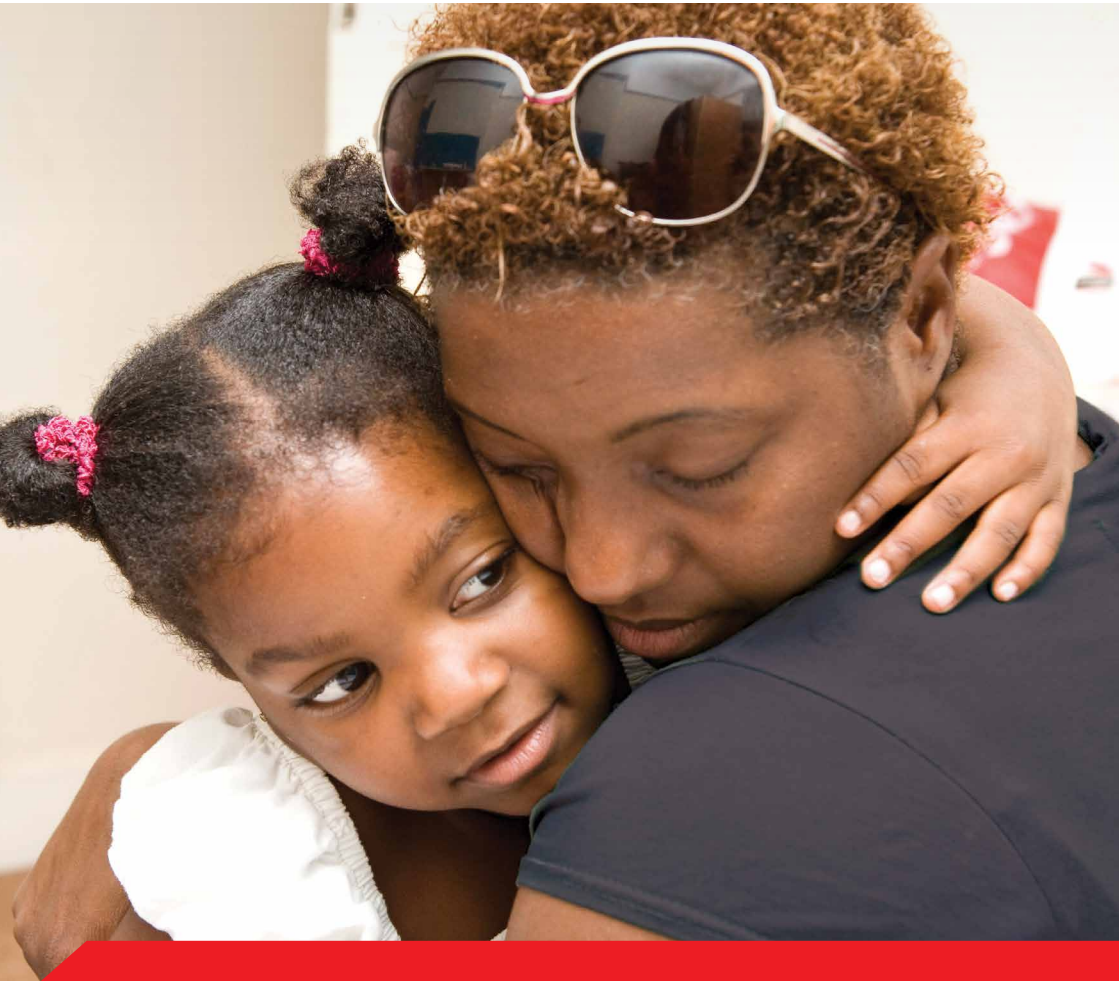


NO ONE SHOULD HAVE TO FIGHT HOMELESSNESS ALONE



Shelter

WHEN LOUISE'S MARRIAGE BROKE DOWN, HER LIFE BEGAN TO **FALL APART**

Unaware her husband had stopped paying the mortgage, the arrears mounted up. Then, one day, it happened – her house was repossessed.

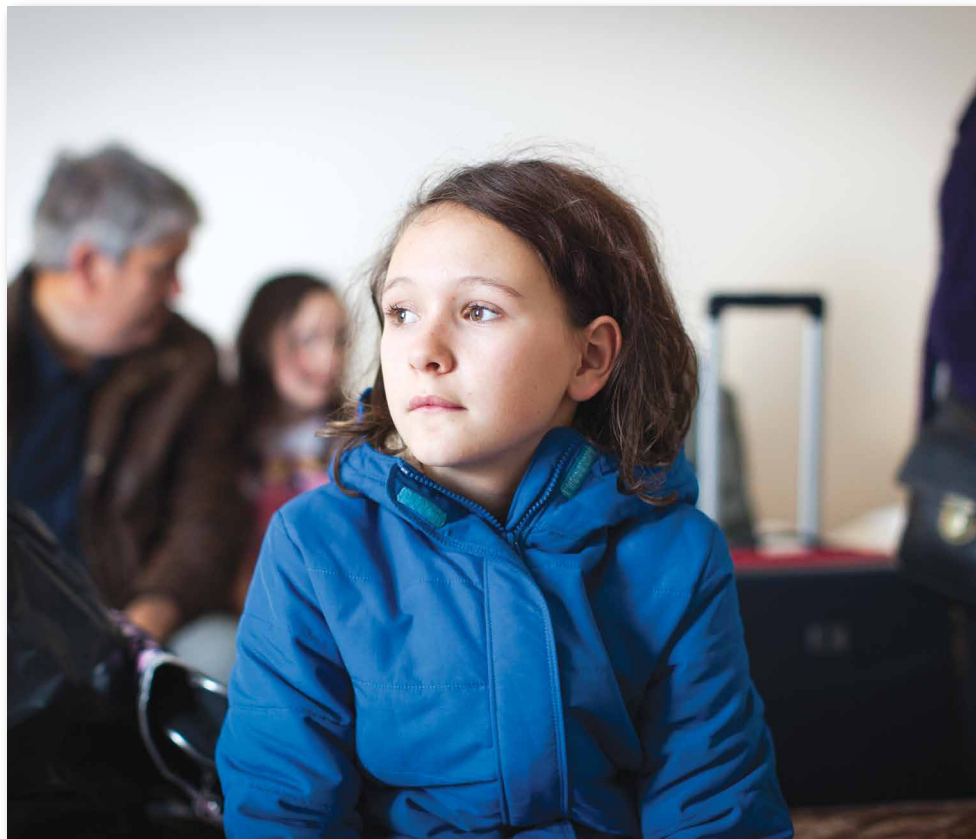
Louise and her four young children – including a son with learning difficulties – were homeless.

She pleaded with the council to find them somewhere to live. Which they did – an emergency B&B, a single room between them.



It was filthy. The family was forced to share a bathroom and kitchen with other residents. There were faeces on the walls, food on the floor. For five cramped, stressed months they lived in this nightmare. That is until Louise rang our helpline.

Our adviser forced the council to act, pointing out that the family's living situation was breaking the law. Within weeks they were moved to a proper, three-bedroom home, where we helped them to settle in and start rebuilding their lives.



**TENS OF THOUSANDS
OF FAMILIES LIKE
LOUISE'S WILL BE
MADE **HOMELESS**
THIS YEAR**

Shocking, isn't it? But you won't see them huddled in shop doorways or sleeping on park benches. They'll be hidden away. On sofas, in spare rooms, emergency B&Bs and hostels. Families and children in temporary, overcrowded or dangerous accommodation – all without a place to call home.

**AND IT CAN HAPPEN
TO **ANY OF US****

Just one thing – losing your job, serious illness, a relationship breaking down – can cause your life to spiral out of control.

Suddenly, there's a drop in income. Meeting rent or mortgage payments becomes a struggle. And in a matter of months, you've lost your home.

For those facing homelessness, the future is bleak. But there is hope. Because of us – and because of you.



HOW WE HELP

Every year, we support millions of people struggling with homelessness and bad housing.

- We run a free national helpline, open all year round, to help people with a whole range of housing issues – from finding a place to sleep to handling mortgage arrears.
- We provide practical housing advice online.
- We run face-to-face advice centres and specialist support services up and down the country.
- Our team of solicitors offer expert legal advice and attend court to represent ordinary people who have lost or are at risk of losing their home.
- And we campaign to tackle the root causes of the housing crisis so that, one day, no one will have to turn to us for help.

If you need our help

- If you or anyone you know is fighting homelessness or bad housing, call 0808 800 4444 or go to [shelter.org.uk/advice](https://www.shelter.org.uk/advice)

HOW YOU CAN HELP

We want to be there for everyone who needs us. But the truth is, we simply can't without your help.

Support us, and you'll be making sure no one fights homelessness and bad housing on their own.

And the good news is, there are plenty of ways to do just that.

Donate

Giving money is a simple and effective way to help families get back on their feet – and stay in the homes they love.
shelter.org.uk/donate

You can also donate goods to a Shelter shop. We can turn your unwanted items into precious funds to help even more people.

Raise money

From bake sales to bike rides, fundraising is great fun and hugely rewarding. Plus the money you raise means we can keep our vital services running.



Lend a hand

Volunteer at one of the Shelter services, shops or offices across the UK – and develop your skills while making a life-changing difference in your community.

Lend your voice

Get behind our campaigns. Together we're louder and stronger – and that makes us better at tackling the causes of bad housing and homelessness.

Find out more at
shelter.org.uk/getinvolved



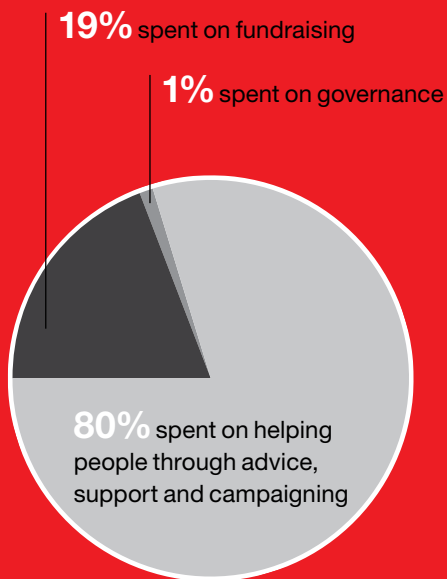
HOW IS YOUR DONATION SPENT?

For every £1 you donate, 80p goes towards helping people struggling with bad housing and homelessness. And we generate an average of £3.80 for every £1 we spend on fundraising.

£10 could help us give crucial advice to a family about to lose their home

£15 could help us negotiate a new mortgage payment scheme for parents who have lost their jobs

£20 could help us secure a grant for food and clothing for a family fleeing domestic violence



Based on average expenditure of Shelter voluntary income for the last 5 years.

Shelter helps millions of people every year struggling with bad housing or homelessness – and we campaign to prevent it in the first place.

We're here so that no one has to fight bad housing or homelessness on their own.